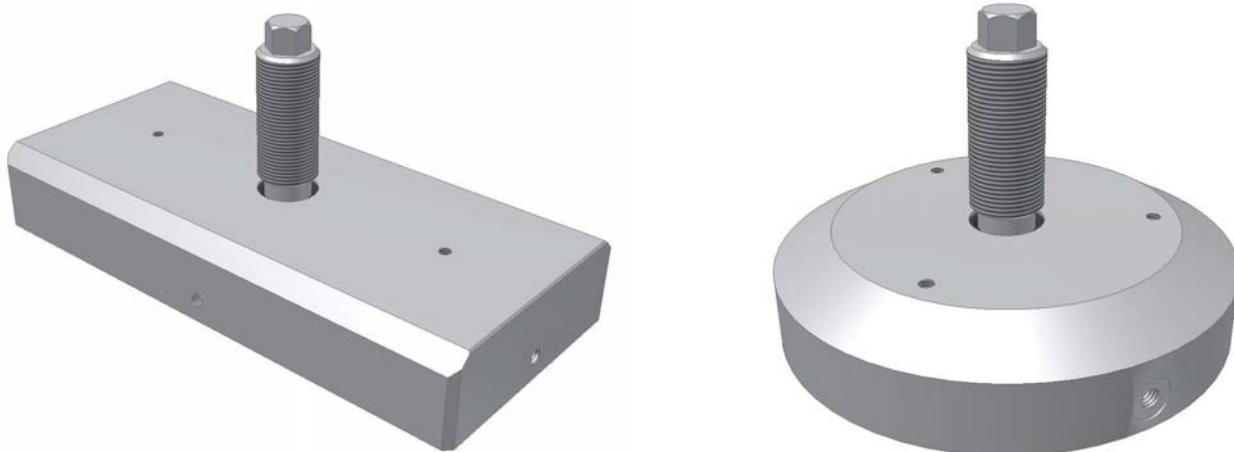
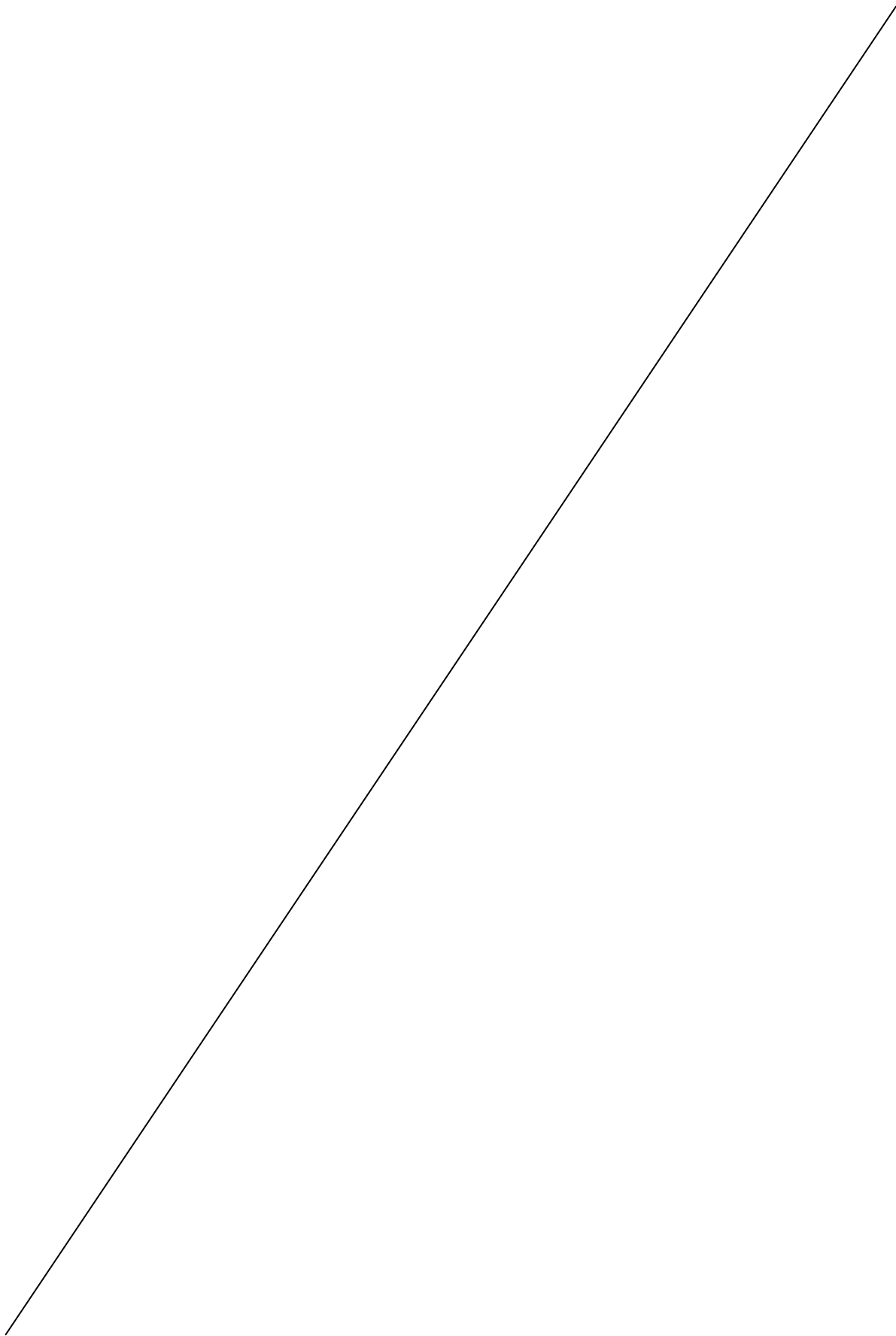


PIVOTING ADJUSTABLE AIR PADS

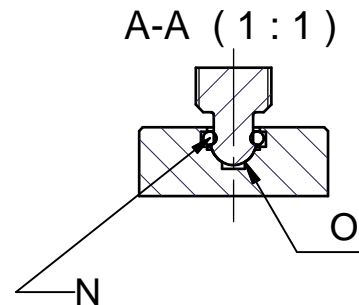
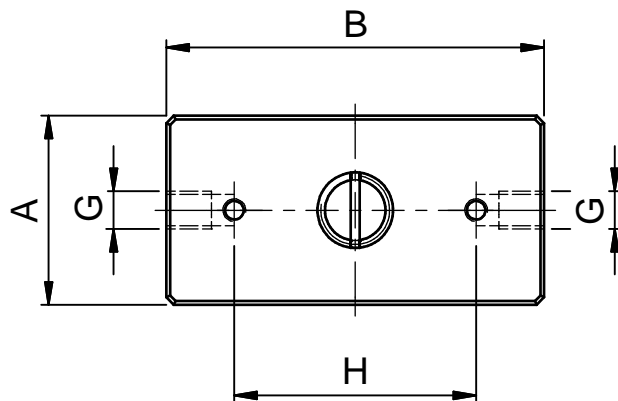
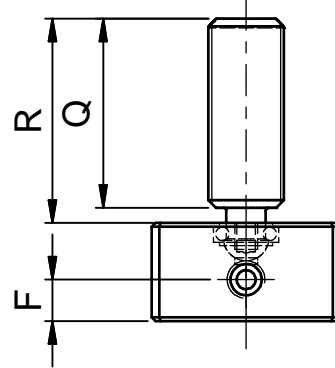
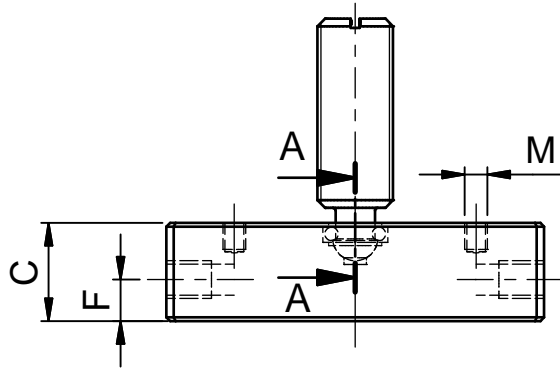
HPR HPC *series*

DIMENSIONAL SPECIFICATIONS



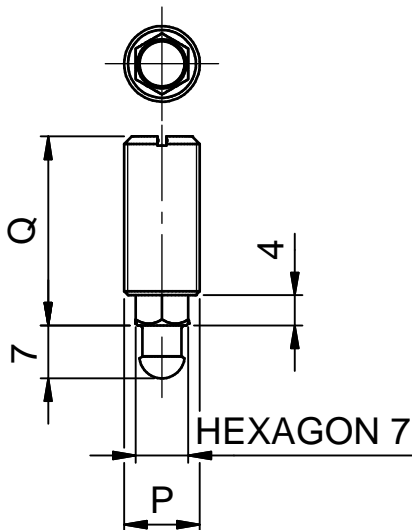


MOD / code	A	B	C	C	D	E	F	G	H	I	L	M	N	O	P	R	Q	S
HPR1.0 F0101-00P010	20	45	13	-	-	-	5,5	M5x0.8x6	32	-	-	M3x0.5x3.5	OR.2018	6s	M10x0.75	27	25	-
HPR1.2 F0101-00P020	25	50	13	-	-	-	5,5	M5x0.8x6	32	-	-	M3x0.5x3.5	OR.2018	6s	M10x0.75	27	25	-
HPR1.4 F0101-00P030	30	60	13	-	-	-	5,5	M5x0.8x6	40	-	-	M3x0.5x3.5	OR.2018	6s	M10x0.75	27	25	-

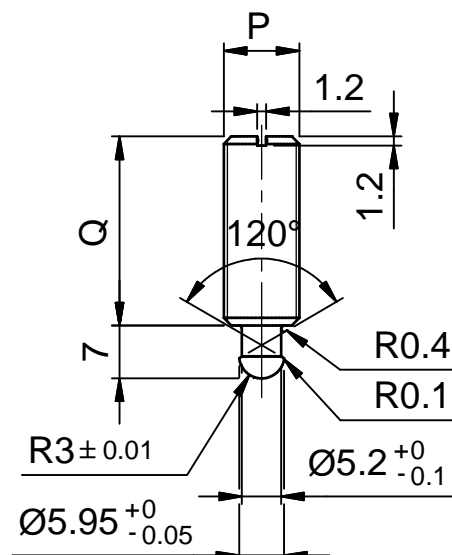


C0301-302018
OR ANGST+PFISTER T=1.78 d= 4.48
OR 2018

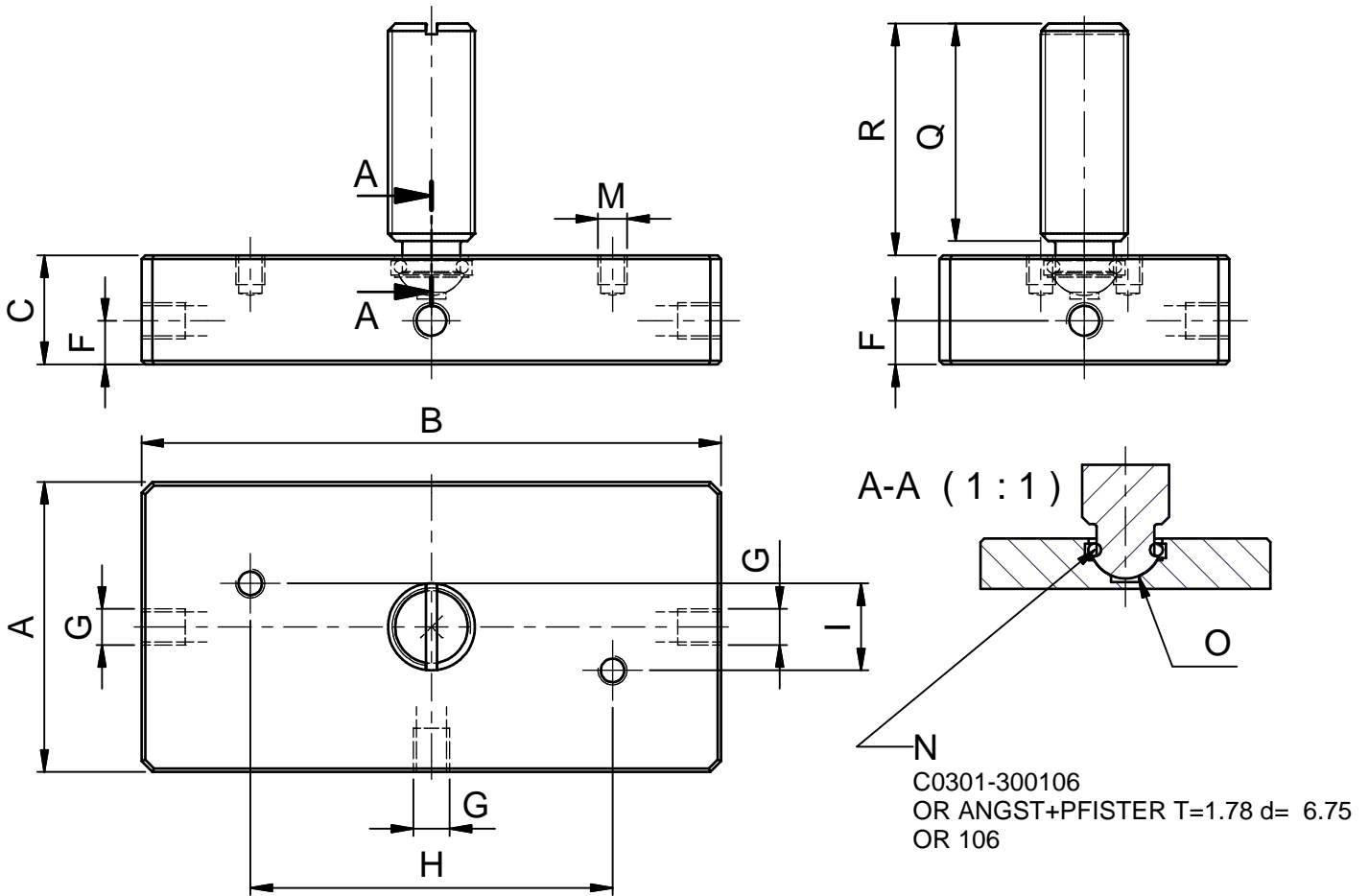
SL101-200115
PIVOT 06 S THREAD M10xL25 WITH HEXAGON



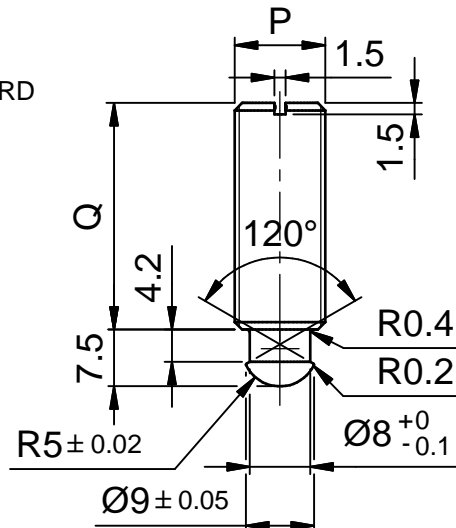
SL101-200110
PIVOT 06 S THREAD M10xL25 STANDARD



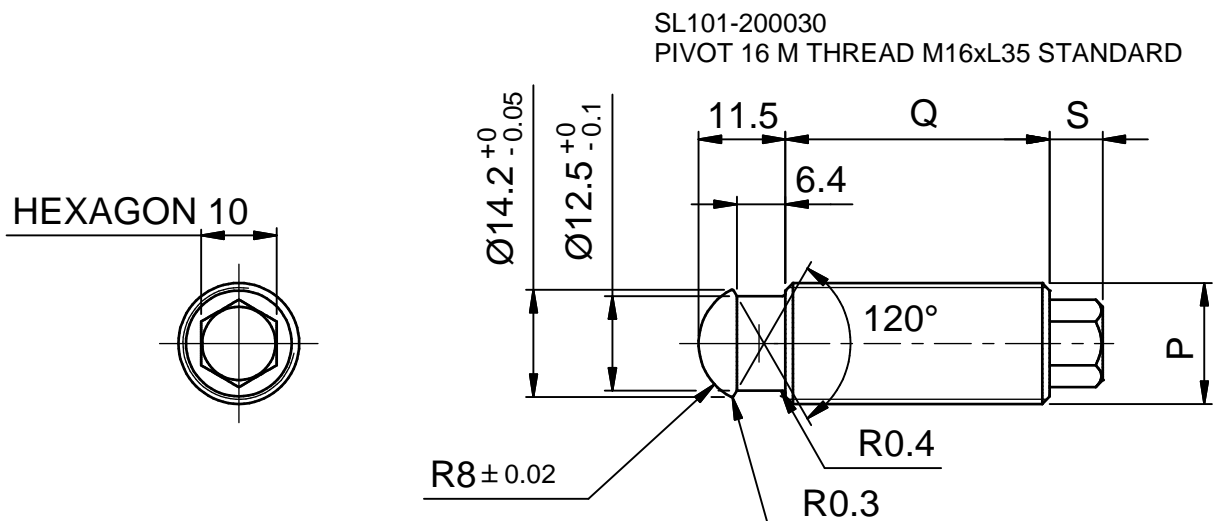
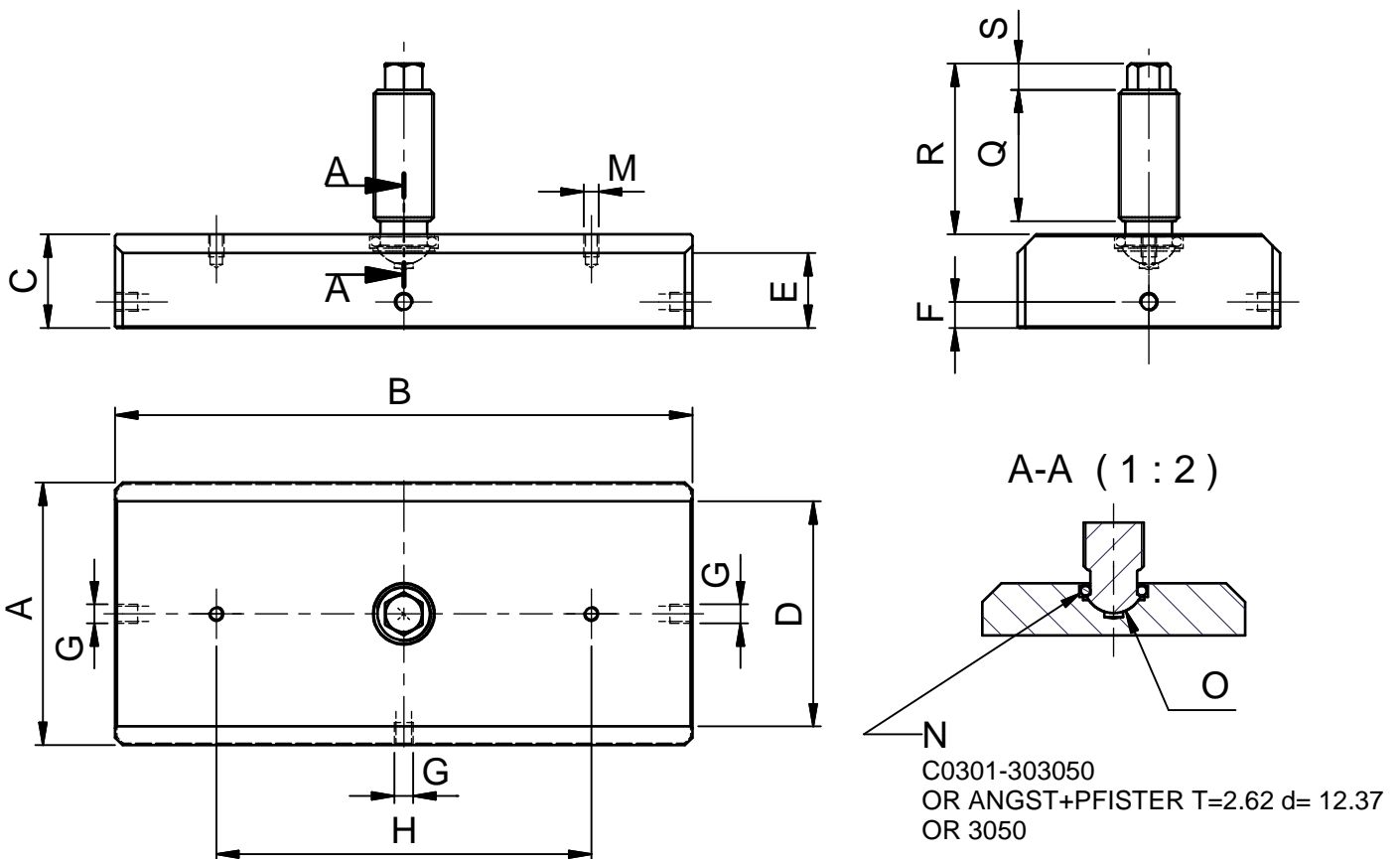
MOD / code	A	B	C	C1	D	E	F	G	H	I	L	M	N	O	P	Q	R	S
HPR2.0 F0101-00P040	30	68	15	-	-	-	6	M5x0.8x6	50	12	-	M4x0.7x4	OR.106	10m	M12x1	30	32	-
HPR2.2 F0101-00P050	35	70	15	-	-	-	6	M5x0.8x6	50	12	-	M4x0.7x4	OR.106	10m	M12x1	30	32	-
HPR2.4 F0101-00P060	40	80	15	-	-	-	6	M5x0.8x6	50	12	-	M4x0.7x4	OR.106	10m	M12x1	30	32	-
HPR2.6 F0101-00P070	40	90	15	-	-	-	6	M5x0.8x6	60	12	-	M4x0.7x4	OR.106	10m	M12x1	30	32	-
HPR2.8 F0101-00P080	50	90	15	-	-	-	6	M5x0.8x6	60	12	-	M4x0.7x4	OR.106	10m	M12x1	30	32	-



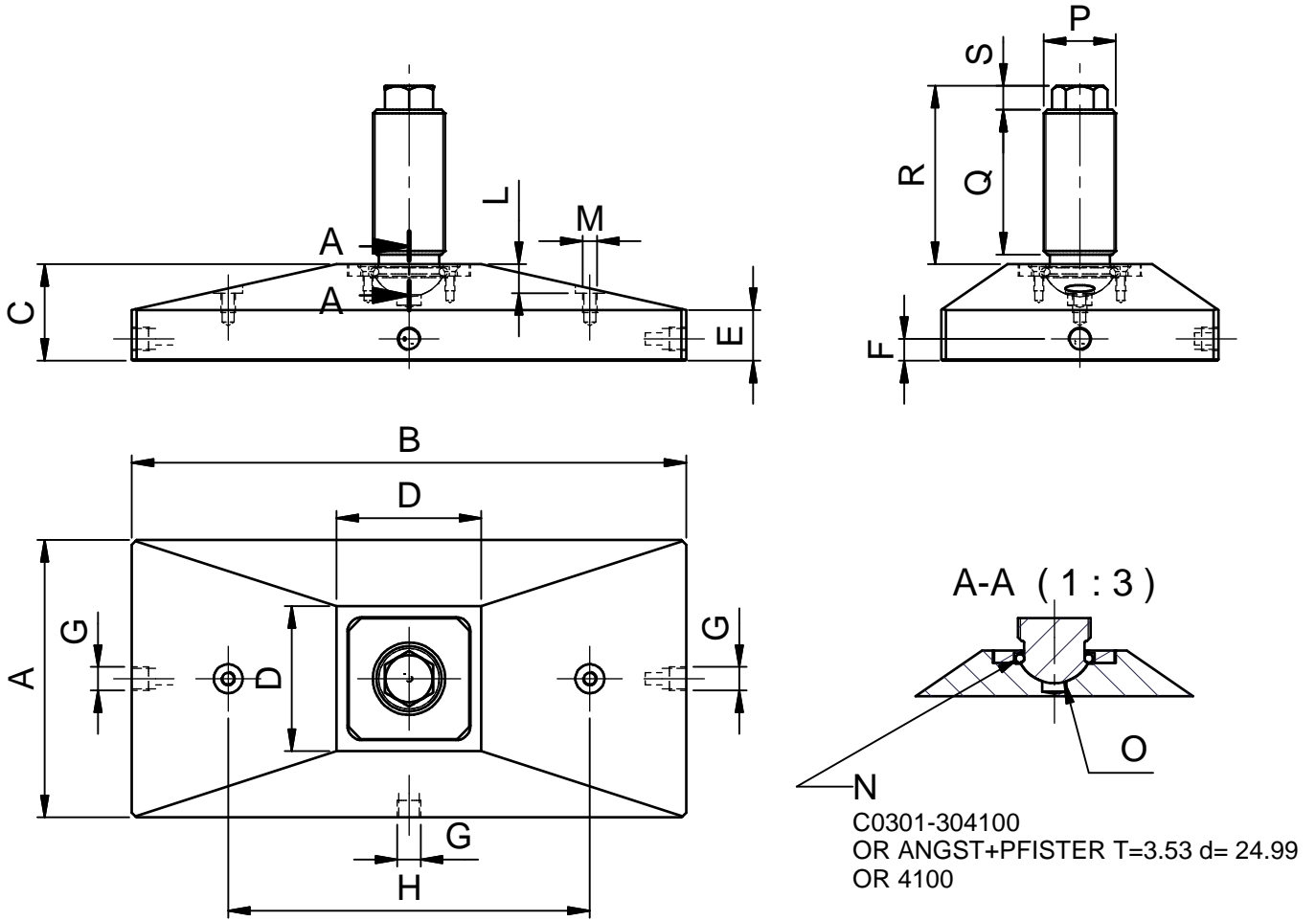
SL101-200020
 PIVOT 10 M THREAD M12xL30 STANDARD



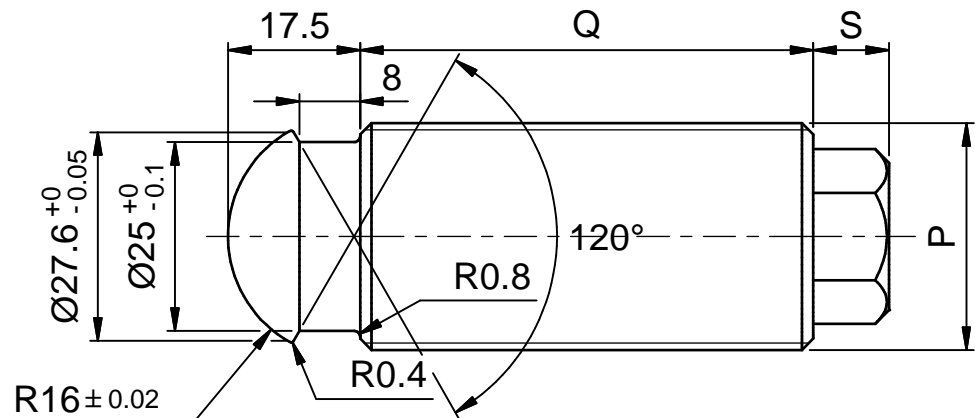
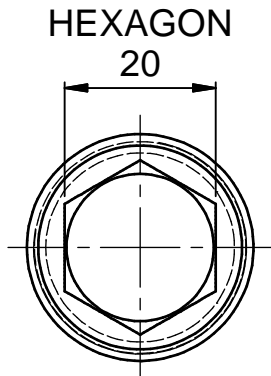
MOD / code	A	B	C	C1	D	E	F	G	H	I	L	M	N	O	P	Q	R	S
HPR3.0 F0101-00P090	50	100	19	-	-	-	6	M5x0.8x6	80	-	-	M4x0.7x6	OR.3050	16m	M16x1.5	35	45	7
HPR3.2 F0101-00P100	50	110	19	-	-	-	6	M5x0.8x6	80	-	-	M4x0.7x6	OR.3050	16m	M16x1.5	35	45	7
HPR3.4 F0101-00P110	60	120	19	-	-	-	6	M5x0.8x6	80	-	-	M4x0.7x6	OR.3050	16m	M16x1.5	35	45	7
HPR3.6 F0101-00P120	70	140	25	-	-	-	7	M5x0.8x6	100	-	-	M4x0.7x6	OR.3050	16m	M16x1.5	35	45	7
HPR3.8 F0101-00P130	70	154	25	-	60	20	7	M5x0.8x6	100	-	-	M4x0.7x6	OR.3050	16m	M16x1.5	35	45	7

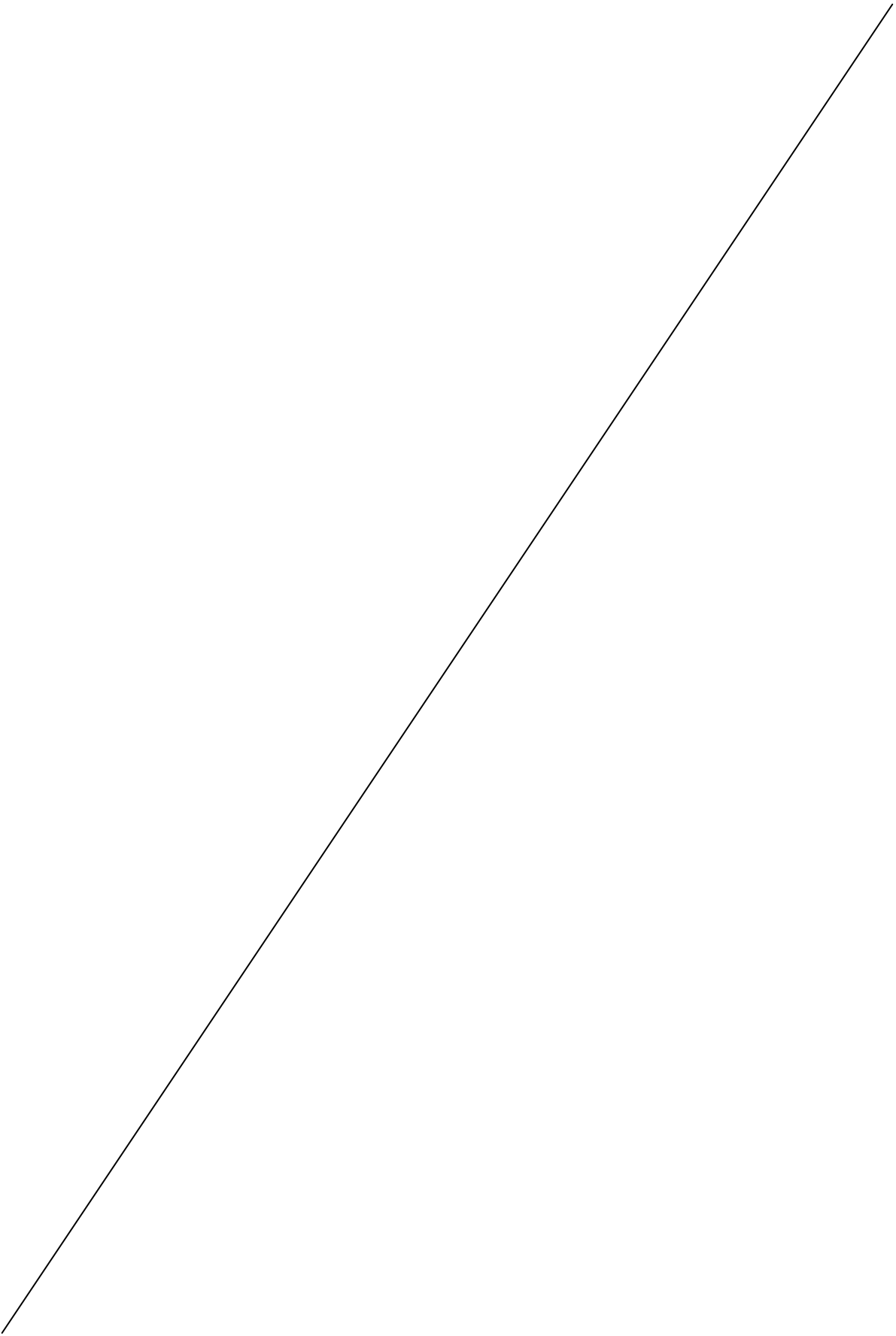


MOD / code	A	B	C	C1	D	E	F	G	H	I	L	M	N	O	P	Q	R	S
HPR5.0 F0101-00P180	100	224	38	-	55	21	9	Gas 1/8x8	150	-	11	M6x1x7	OR.4100	32m	M30x1.5	60	74	10
HPR5.2 F0101-00P190	115	230	40	-	60	21	9	Gas 1/8x8	150	-	12	M6x1x7	OR.4100	32m	M30x1.5	60	74	10
HPR5.4 F0101-00P200	115	254	45	-	65	22	9	Gas 1/8x8	150	-	12	M8x1.25x8	OR.4100	32m	M30x1.5	60	74	10
HPR5.6 F0101-00P210	130	265	50	-	70	22	9	Gas 1/8x8	160	-	13	M10x1.5x10	OR.4100	32m	M30x1.5	60	74	10

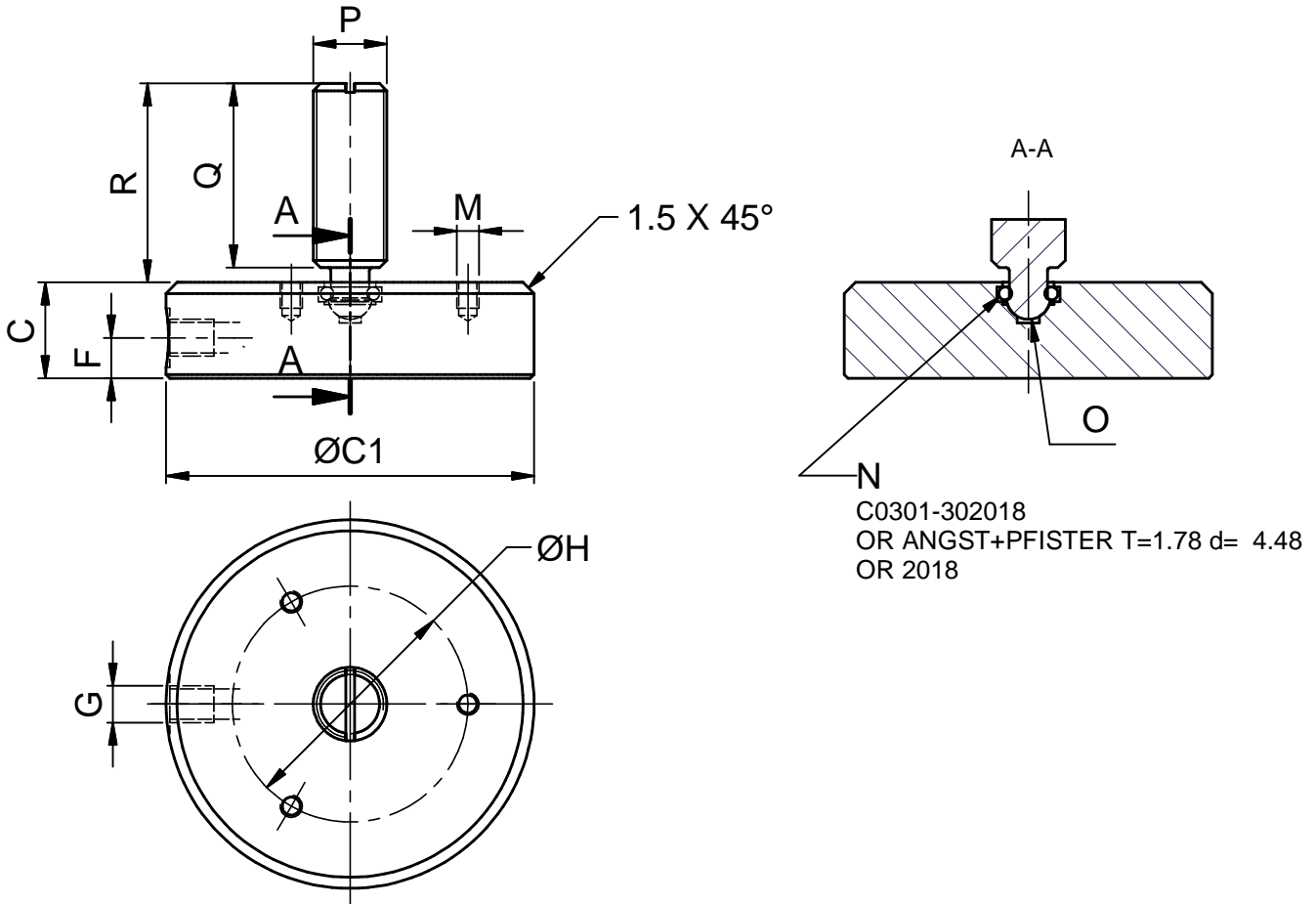


SL101-200060
PIVOT 32 M THREAD M30xL60 STANDARD

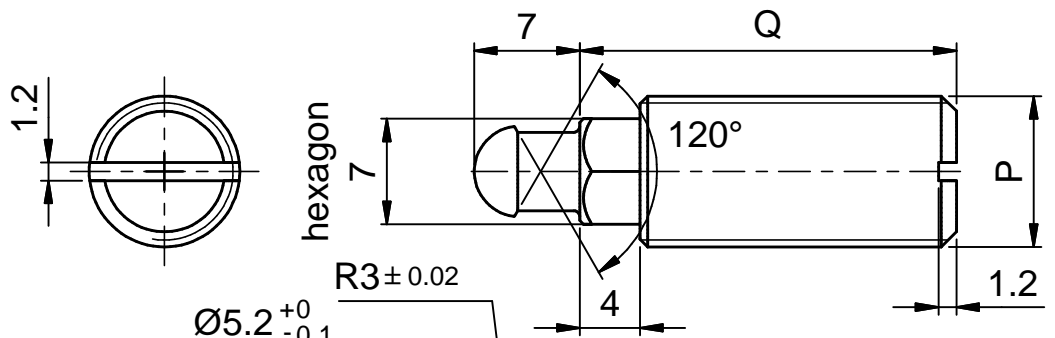




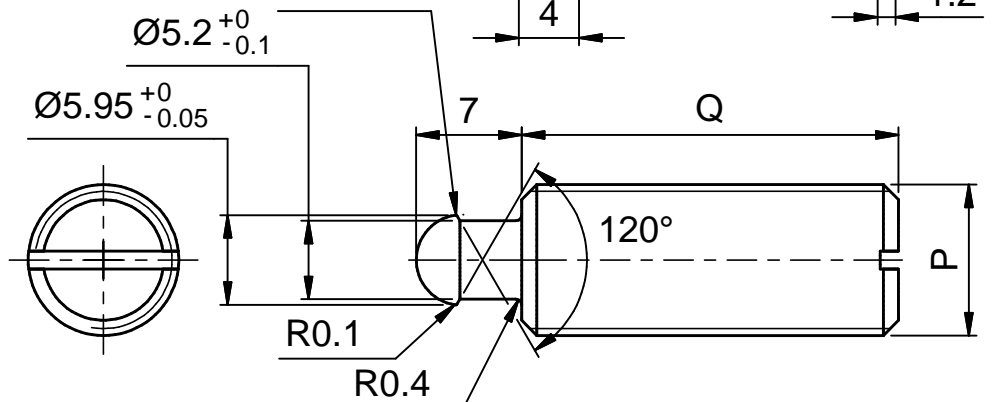
MOD / code	A	B	C	C1	D	E	F	G	H	I	L	M	N	O	P	Q	R	S
HPC1.0 F0102-00P010	-	-	12	40	-	-	5.5	M5x0.8x6	32	-	-	M3x0.5x3.5	OR.2018	6s	M10x0.75	25	27	-
HPC1.2 F0102-00P020	-	-	13	50	-	-	5.5	M5x0.8x6	36	-	-	M3x0.5x3.5	OR.2018	6s	M10x0.75	25	27	-



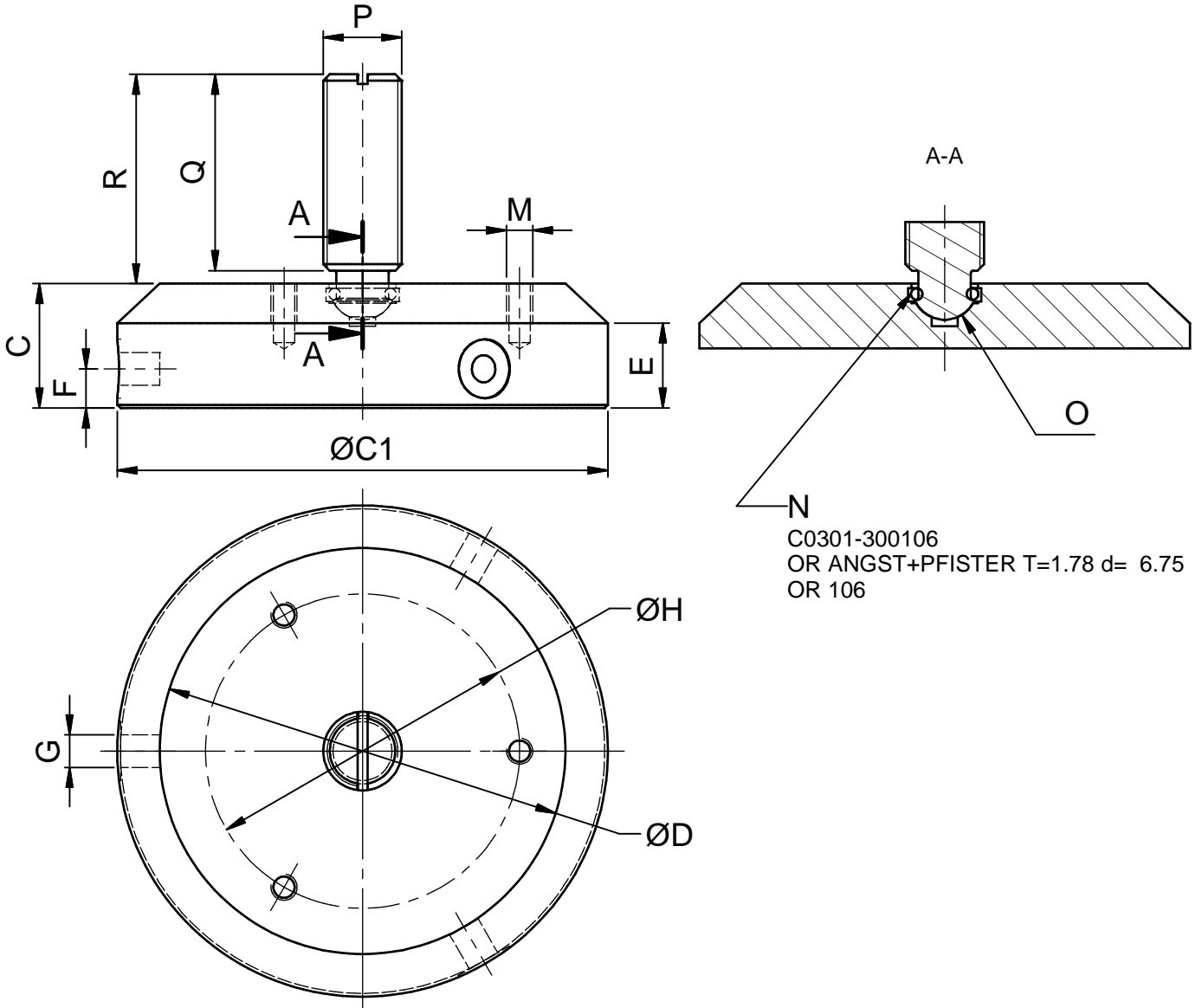
SL101-200115
PIVOT 06 S thread M10xL25
with hexagon



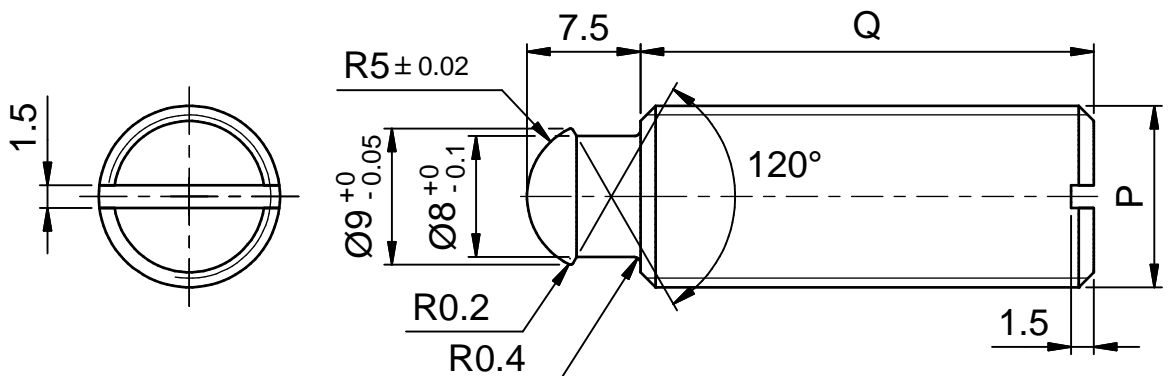
SL101-200110
PIVOT 06 S thread M10xL25
standard



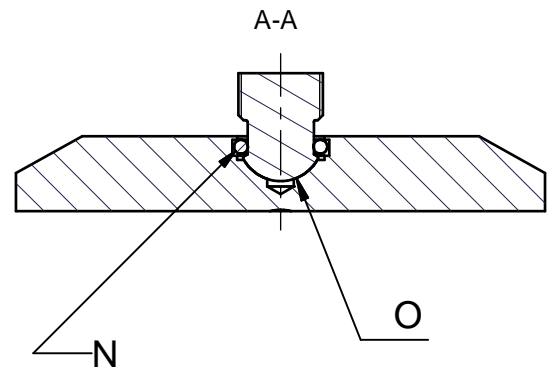
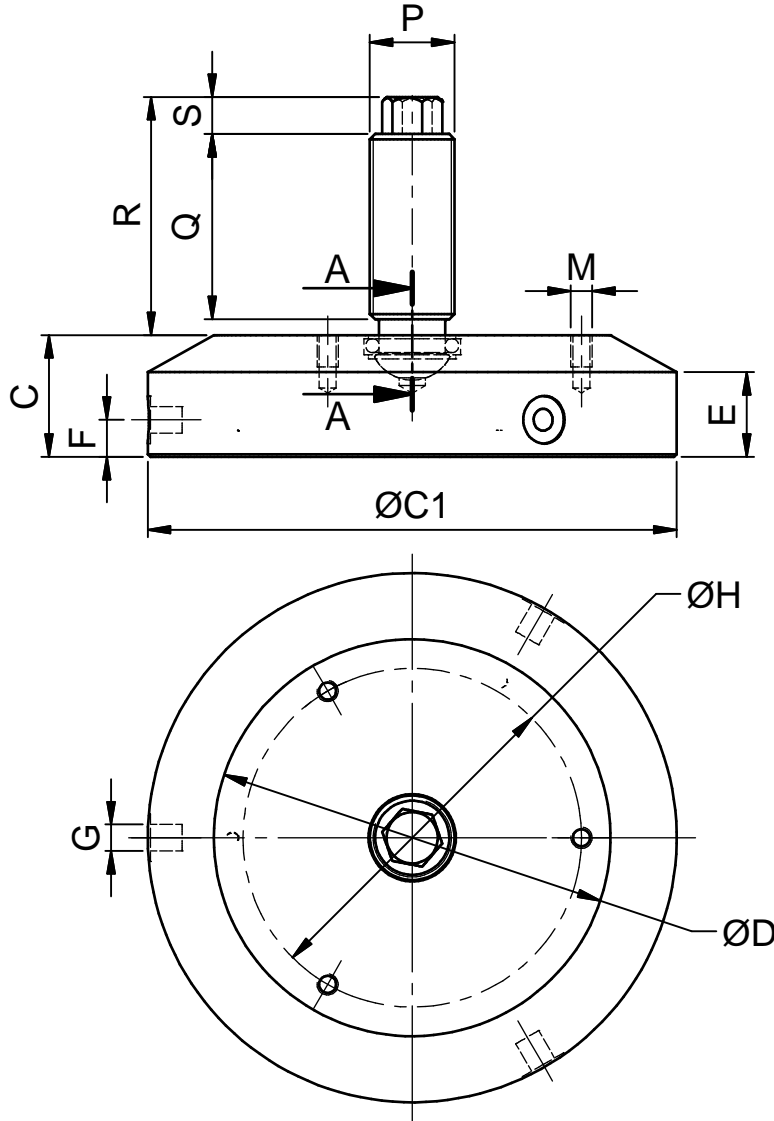
MOD / code	A	B	C	C1	D	E	F	G	H	I	L	M	N	O	P	Q	R	S
HPC2.0 F0102-00P030	-	-	16	60	54	13	6	M5x0.8x6	44	-	-	M3x0.5x4	OR.106	10m	M12x1	30	32	-
HPC2.2 F0102-00P040	-	-	16	70	62	13	6	M5x0.8x6	44	-	-	M3x0.5x4	OR.106	10m	M12x1	30	32	-
HPC2.4 F0102-00P050	-	-	19	75	62	13	6	M5x0.8x6	48	-	-	M4x0.7x6	OR.106	10m	M12x1	30	32	-
HPC2.6 F0102-00P060	-	-	19	80	66	13	6	M5x0.8x6	48	-	-	M4x0.7x6	OR.106	10m	M12x1	30	32	-



SL101-200020
PIVOT 10 M
thread M12xL30
standard

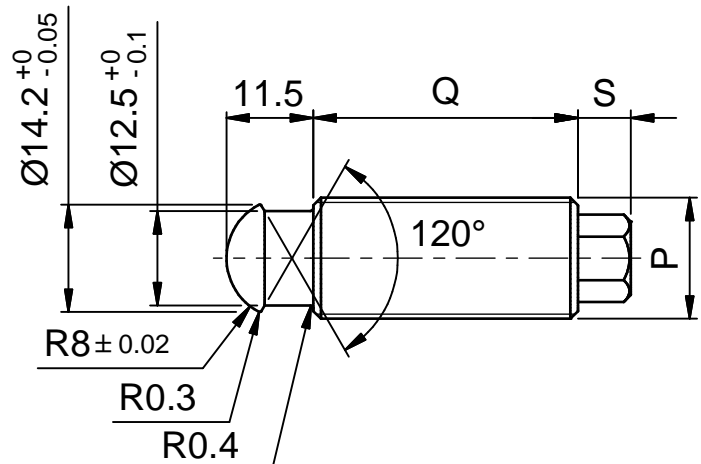
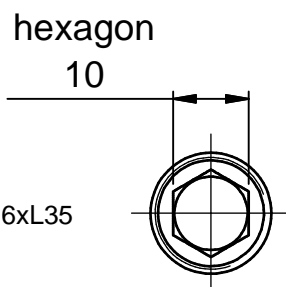


MOD / code	A	B	C	C1	D	E	F	G	H	I	L	M	N	O	P	Q	R	S
HPC3.0 F0102-00P070	-	-	22	90	68	16	7	M5x0.8x6	58	-	-	M4x0.7x6	OR.3050	16m	M16x1.5	35	45	7
HPC3.2 F0102-00P080	-	-	23	100	75	16	7	M5x0.8x6	64	-	-	M4x0.7x6	OR.3050	16m	M16x1.5	35	45	7
HPC3.4 F0102-00P090	-	-	25	110	80	16	7	M5x0.8x6	68	-	-	M4x0.7x6	OR.3050	16m	M16x1.5	35	45	7



N
C0301-303050
OR ANGST+PFISTER T=2.62 d= 12.37
OR 3050

SL101-200030
PIVOT 16 M thread M16xL35
standard



MOD / code	A	B	C	C1	D	E	F	G	H	I	L	M	N	O	P	Q	R	S
HPC4.0 F0102-00P100	-	-	30	130	100	20	9	Gas 1/8x8	80	-	-	M6x1x7	OR.4081	25m	M25x1.5	45	58	10
HPC4.2 F0102-00P110	-	-	35	160	116	20	9	Gas 1/8x8	96	-	-	M6x1x7	OR.4081	25m	M25x1.5	45	58	10
HPC4.4 F0102-00P120	-	-	40	190	140	20	9	Gas 1/8x8	120	-	-	M6x1x7	OR.4081	25m	M25x1.5	45	58	10

