

PNEUMOSTATIC PADS

OVERVIEW

HPR series

USE DESTINATIONS AND APPLICATIONS

The use of this pads type is suggested for guide systems in light and precise application. Their versatility permits to the engineer to solve problems with the highest flexibility.

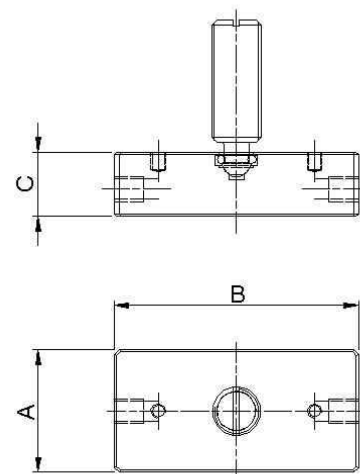
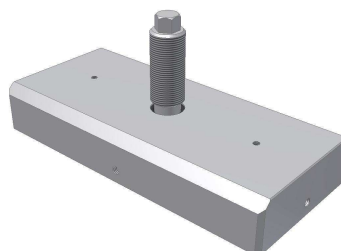
The potential application are various:

- Guide systems for the metrology / Quality check (CMM, optical test, ecc.)
- Machining Center for light machining (laser cutting, micro-milling, electroerosion, ecc.)
- High accuracy manipulators

CHARACTERISTICS

The new series HPR and HPC Air Pads are realized in Alluminium with hard surface oxidation. They are supplied with adjustable pivoting spherical pin.

This kind of assembly method permits to the pad to be always aligned to the sliding surface. The threaded pin permits to adjust carefully the working air gap (expecially in case of face to face pads disposition) and the axis alignment.



MODEL	code	Supply pressure	Meatus	LOAD	Stiffness	Consumption	Dimensions [mm]			
		p [bar]	h [μm]	L [daN]	R [daN/ μm]	Q [Nl/min]	A	B	C	R
HPR1.0	F0101-00P010	4	10	12 \pm 2	\geq 1	1.7	20	45	13	27
HPR1.2	F0101-00P020	4	10	17 \pm 2	\geq 1	1.9	25	50	13	27
HPR1.4	F0101-00P030	4	10	21 \pm 2	\geq 2	2.0	30	60	13	27
HPR2.0	F0101-00P040	4	10	26 \pm 2	\geq 2,7	2.9	30	68	15	30
HPR2.2	F0101-00P050	4	10	38 \pm 3	\geq 4,3	3	35	70	15	30
HPR2.4	F0101-00P060	4	10	53 \pm 4	\geq 5	3.1	40	80	15	30
HPR2.6	F0101-00P070	4	10	58 \pm 4	\geq 5	3.25	40	90	15	30
HPR2.8	F0101-00P080	4	10	78 \pm 5	\geq 6,5	3.35	50	90	15	30
HPR3.0	F0101-00P090	4	10	86 \pm 5	\geq 7,5	3.2	50	100	19	45
HPR3.2	F0101-00P100	4	10	96 \pm 6	\geq 7,5	3.35	50	110	19	45
HPR3.4	F0101-00P110	4	10	118 \pm 7	\geq 11,5	3.6	60	120	19	45
HPR3.6	F0101-00P120	4	10	152 \pm 8	\geq 18	3.9	70	140	25	45
HPR3.8	F0101-00P130	4	10	168 \pm 9	\geq 18	4.2	70	154	25	45
HPR4.0	F0101-00P140	4	10	198 \pm 11	\geq 20	5.2	80	155	27	58
HPR4.2	F0101-00P150	4	10	252 \pm 13	\geq 17	5.7	85	186	27	58
HPR4.4	F0101-00P160	4	10	268 \pm 14	\geq 23,5	6.25	90	180	30	58
HPR4.6	F0101-00P170	4	10	372 \pm 19	\geq 29	6.85	100	205	35	58
HPR5.0	F0101-00P180	4	10	426 \pm 21	\geq 29	7.45	100	224	38	74
HPR5.2	F0101-00P190	4	10	496 \pm 25	\geq 34	8.1	115	230	40	74
HPR5.4	F0101-00P200	4	10	665 \pm 33	\geq 29	8.8	115	254	45	74
HPR5.6	F0101-00P210	4	10	632 \pm 31	\geq 47	9.6	130	265	50	74

FULL SPECIFICATIONS ON www.mager-ab.com

PNEUMOSTATIC PADS OVERVIEW

HPC series

USE DESTINATIONS AND APPLICATIONS

The use of this pads type is suggested for guide systems in light and precise application. Their versatility permits to the engineer to solve problems with the highest flexibility.

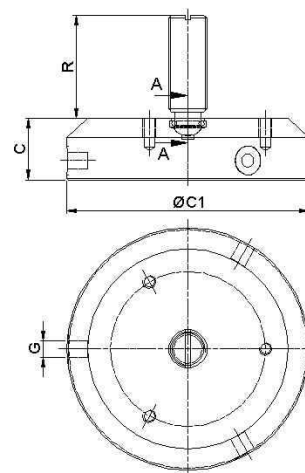
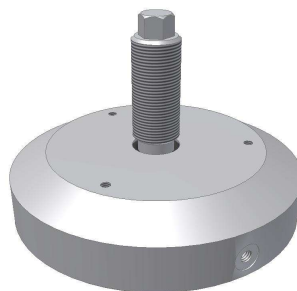
The potential application are various:

- Guide systems for the metrology / Quality check (CMM, optical test, ecc.)
- Machining Center for light machining (laser cutting, micro-milling, electroerosion, ecc.)
- High accuracy manipulators

CHARACTERISTICS

The new series HPR and HPC Air Pads are realized in Alluminium with hard surface oxidation. They are supplied with adjustable pivoting spherical pin.

This kind of assembly method permits to the pad to be always aligned to the sliding surface. The threaded pin permits to adjust carefully the working air gap (expecially in case of face to face pads disposition) and the axis alignment.



MODEL	code	Supply Pressure	Meatus	LOAD	Stiffenss	Consumption	Dimensions [mm]		
		p [bar]	h [μm]	L [daN]	R [daN/ μm]	Q [NI/min]	$C1$	C	R
HPC1.0	F0102-00P010	4	10	21 \pm 2	\geq 2	2,75	40	12	27
HPC1.2	F0102-00P020	4	10	33 \pm 3	\geq 3	2,85	50	13	27
HPC2.0	F0102-00P030	4	10	52 \pm 3	\geq 4,5	2,9	60	16	32
HPC2.2	F0102-00P040	4	10	68 \pm 4	\geq 7	3	70	16	32
HPC2.4	F0102-00P050	4	10	78 \pm 5	\geq 8	3,2	75	19	32
HPC2.6	F0102-00P060	4	10	89 \pm 5	\geq 8	3,5	80	19	32
HPC3.0	F0102-00P070	4	10	117 \pm 6	\geq 11	3,8	90	22	35
HPC3.2	F0102-00P080	4	10	168 \pm 9	\geq 12,5	4,4	100	23	35
HPC3.4	F0102-00P090	4	10	202 \pm 10	\geq 15,5	5,2	110	25	35
HPC4.0	F0102-00P100	4	10	260 \pm 13	\geq 24,5	6,5	130	30	58
HPC4.2	F0102-00P110	4	10	450 \pm 23	\geq 30,5	7,65	160	35	58
HPC4.4	F0102-00P120	4	10	620 \pm 31	\geq 40	8,8	190	40	58

FULL SPECIFICATIONS ON www.mager-ab.com